



## EUROPEAN HOLOCAUST RESEARCH INFRASTRUCTURE

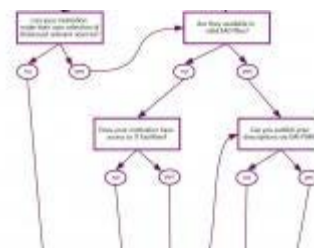


EHRI Newsletter - February 2018

### EHRI for Collection Holding Institutions: New Webpage Explains How to Integrate Your Data in the EHRI Portal

01/02/2018

EHRI just launched a new webpage “[EHRI for Collection Holding Institutions](#)” on its project website to facilitate and group all the new methodologies and tools that EHRI has developed in order to integrate descriptions of Holocaust-related sources into the [EHRI portal](#). If you work for an institution that holds Holocaust-related archival materials, in Europe or beyond, you can now become part of the EHRI Portal.



[Read more >](#)

### 2017: A Successful Year for EHRI in Italy

05/02/2018

In 2015, the [Foundation Jewish Contemporary Documentation Center CDEC](#) in Milan joined the EHRI project and became involved in no less than five key areas: Dissemination and Communication ([Work Package 2](#)), Expanding



and Keeping (WP3), Coordination with other Research Infrastructures (WP6), Data Identification and Integration (WP9), and Users and Standards (WP11).

[Read more >](#)

## Your Opinion Matters: Please Fill Out Our Survey on the Impact of Digital Approaches on Research and Archiving

01/02/2018

The European Holocaust Research Infrastructure invites you to participate in a [web survey](#) aimed at institutions that hold Holocaust-related archival collections. The survey aims to investigate the impact that digital approaches have on research and archiving. In particular, we want to understand the effects that EHRI has on collection holding institutions and archival work practices.



[Read more >](#)

## New EHRI Document Blog: Engaging the Crowd with Holocaust Oral Testimonies



01/02/2018

The latest contribution to the [EHRI Document Blog](#) was written by Rebecca Dillmeier from USHMM. The post reports on an ongoing crowdsourcing project that addresses the search and discoverability challenges of large oral history collections. The post gives an insight into the experiences and challenges of using crowdsourcing for oral history transcripts to increase access to this rich resource.

[Read more >](#)

## People in EHRI: Charlotte Hauwaert from the Belgian State Archives | CegeSoma: Coordination of EHRI's Data Integration

01/02/2018

I joined the EHRI project in September 2016, just after finishing my Advanced Master's program. I am based at the [Belgian State Archives | CegeSoma](#) (Centre for Historical Research and Documentation on War and Society) in Brussels.



[Read more >](#)

## New Branch for the Vilna Gaon State Jewish Museum: Samuel Bak Museum Opens in Vilnius



05/02/2018

In November 2017, the [Vilna Gaon State Jewish Museum](#) - EHRI's partner in Lithuania - opened a new branch devoted to the internationally renowned painter Samuel Bak, born in Vilnius in 1933. It is the first [museum](#) in the world devoted solely to the art of this famous Litvak artist.

[Read more >](#)

## EHRI Job Opportunity for a Research Associate with EHRI Partner King's College London

06/02/2018

The Department of Digital Humanities of [King's College London](#) is seeking a Research Associate to contribute to the European Holocaust Research Infrastructure (EHRI), a major EU-funded research infrastructure project.

The successful candidate for this position will be a researcher with experience in digital approaches to historical research and/or archives. She/he will have excellent written and oral communication skills, and be



able to write high quality project deliverables and reports.

[Read more >](#)

---

## EHRI partners

---

- NIOD Institute for War, Holocaust and Genocide Studies (NL)
- CEGES-SOMA Centre for Historical Research and Documentation on War and Contemporary Society (BE)
- Jewish Museum in Prague (CZ)
- Institute of Contemporary History Munich - Berlin (DE)
- YAD VASHEM The Holocaust Martyrs' and Heroes' Remembrance Authority (IL)
- United States Holocaust Memorial Museum (USA)
- Bundesarchiv (DE)
- The Wiener Library for the Study of the Holocaust & Genocide (UK)
- Holocaust Documentation Centre (SK)
- Polish Centre for Holocaust Research (PL)
- The Jewish Museum of Greece (GR)
- Kazerne Dossin: Memorial, Museum and Documentation Centre on Holocaust and Human Rights (BE)
- Jewish Historical Institute (PL)
- King's College London (UK)
- Ontotext AD (BG)
- Elie Wiesel National Institute for the Study of Holocaust in Romania (RO)
- DANS Data Archiving and Networked Services (NL)
- Shoah Memorial, Museum, Center for Contemporary Jewish Documentation (FR)
- ITS International Tracing Service (DE)
- Hungarian Jewish Archives (HU)
- INRIA Institute for Research in Computer Science and Automation (FR)
- Vilna Gaon Jewish Museum (LT)
- VWI Vienna Wiesenthal Institute for Holocaust Studies (AT)
- Foundation Jewish Contemporary Documentation Center (IT)

---

EHRI, European Holocaust Research Infrastructure, NIOD. Institute for War, Holocaust and Genocide Studies, Herengracht 380, NL-1016 CJ Amsterdam, The Netherlands, +31(0)20-5233800 © 2011 EHRI

Watch a [video introduction to the EHRI Portal](#)

